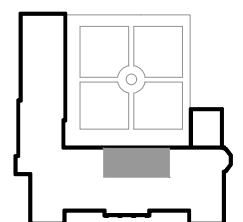


1 Bed Flat
First Floor
61m² / 656ft²

Lounge:	5.08 x 3.84m
Kitchen / Dining:	3.30 x 2.45m
Bedroom 1 :	4.08 x 2.75m
Utility :	0.94 x 1.60m
Bathroom :	2.05 x 2.45m



All dimensions / areas are approximate and subject to change due to normal building tolerances.
 Leslie House Dev.Co.Ltd. reserve the right to make amendments to the design and specification as the development progresses and drawings updated.